

November 10, 2014

The Board of Commissioners of Public Utilities
Prince Charles Building
120 Torbay Road, P.O. Box 21040
St. John's, Newfoundland & Labrador
A1A 5B2

Attention: Ms. Cheryl Blundon
Director Corporate Services & Board Secretary

Dear Ms. Blundon:

**Re: Newfoundland and Labrador Hydro - the Board's Investigation and Hearing into
Supply Issues and Power Outages on the Island Interconnected System - Request for
Project Updates**

Further to the Board's letter of August 1, 2014 regarding the above referenced matter, enclosed are the originals and 12 copies of Hydro's status updates for the following projects:

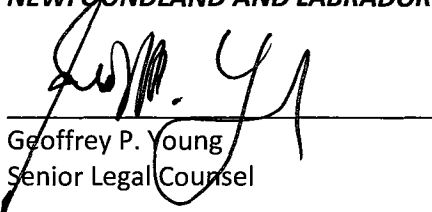
- Sunnyside Replacement Equipment; and
- Western Avalon Terminal Station T5 Tap Changer Replacement.

We trust you will find the enclosed updates to be in order.

Should you have any questions, please do not hesitate to contact the undersigned.

Yours truly,

NEWFOUNDLAND AND LABRADOR HYDRO



Geoffrey P. Young
Senior Legal Counsel

GPY/jc

cc: Gerard Hayes – Newfoundland Power
Paul Coxworthy – Stewart McKelvey Stirling Scales
ecc: Roberta Frampton Benefiel – Grand Riverkeeper Labrador

Thomas Johnson – Consumer Advocate
Danny Dumaresque

Western Avalon Terminal Station T5 Tap Changer Replacement

Status Update Briefing– November 7, 2014

Boundless Energy



Contents

- Project Dashboard
- Progress & Schedule Summary
- Risk Analysis
- Project Photos

(Incremental to information provided Oct 24)

Project Dashboard

PM - Western Avalon Transformer Project
Joe Yurchesyn

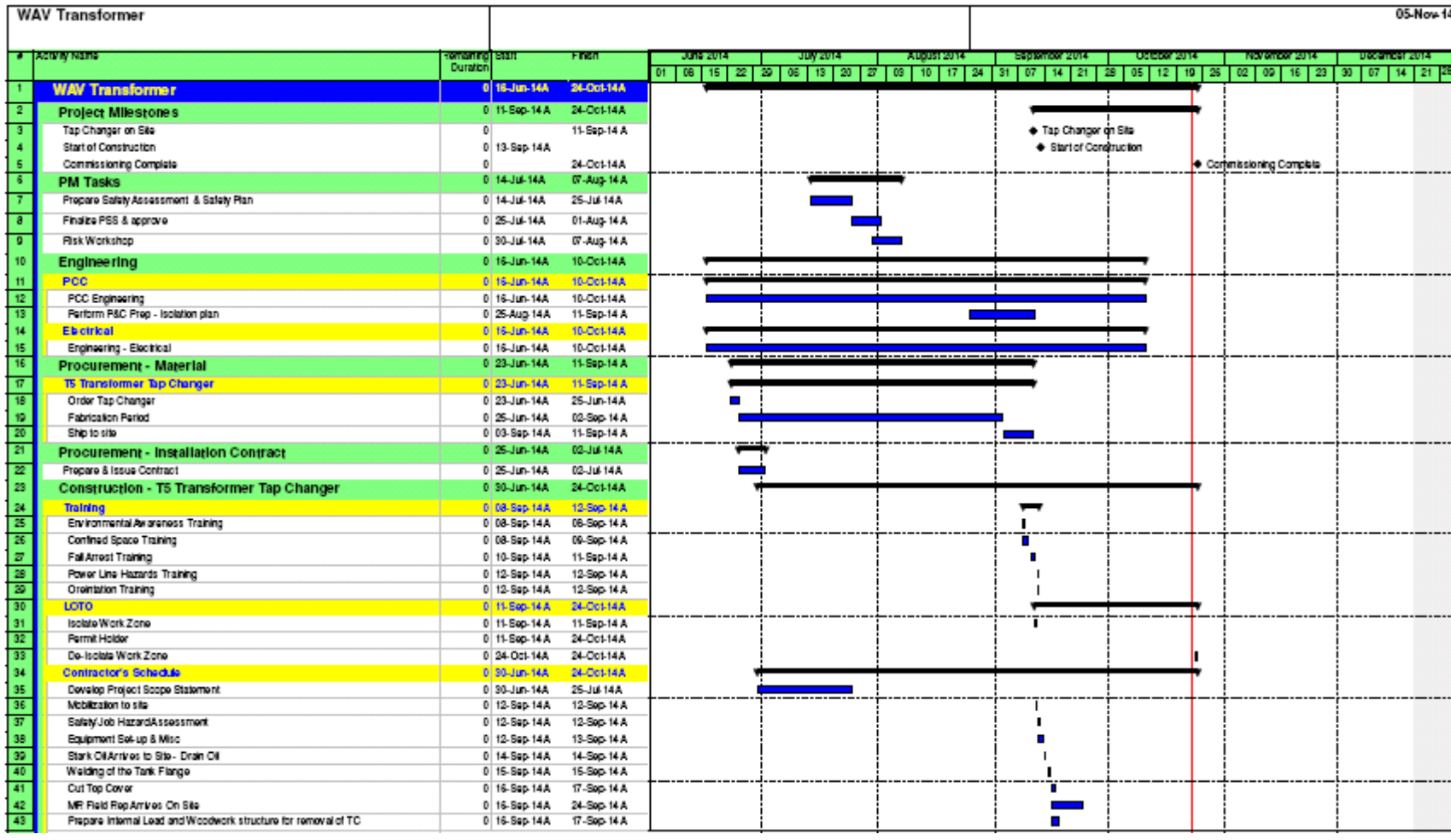
- Safety
- Quality
- Schedule
- Cost

Progress & Schedule Summary

- T5 Transformer In-Service, project complete.
- Project in compliance to plan against Safety, Quality, Cost, and Delivery targets.

Level 2 - Schedule Summary

Project Complete on Schedule. (Red line fixed at last report position.)



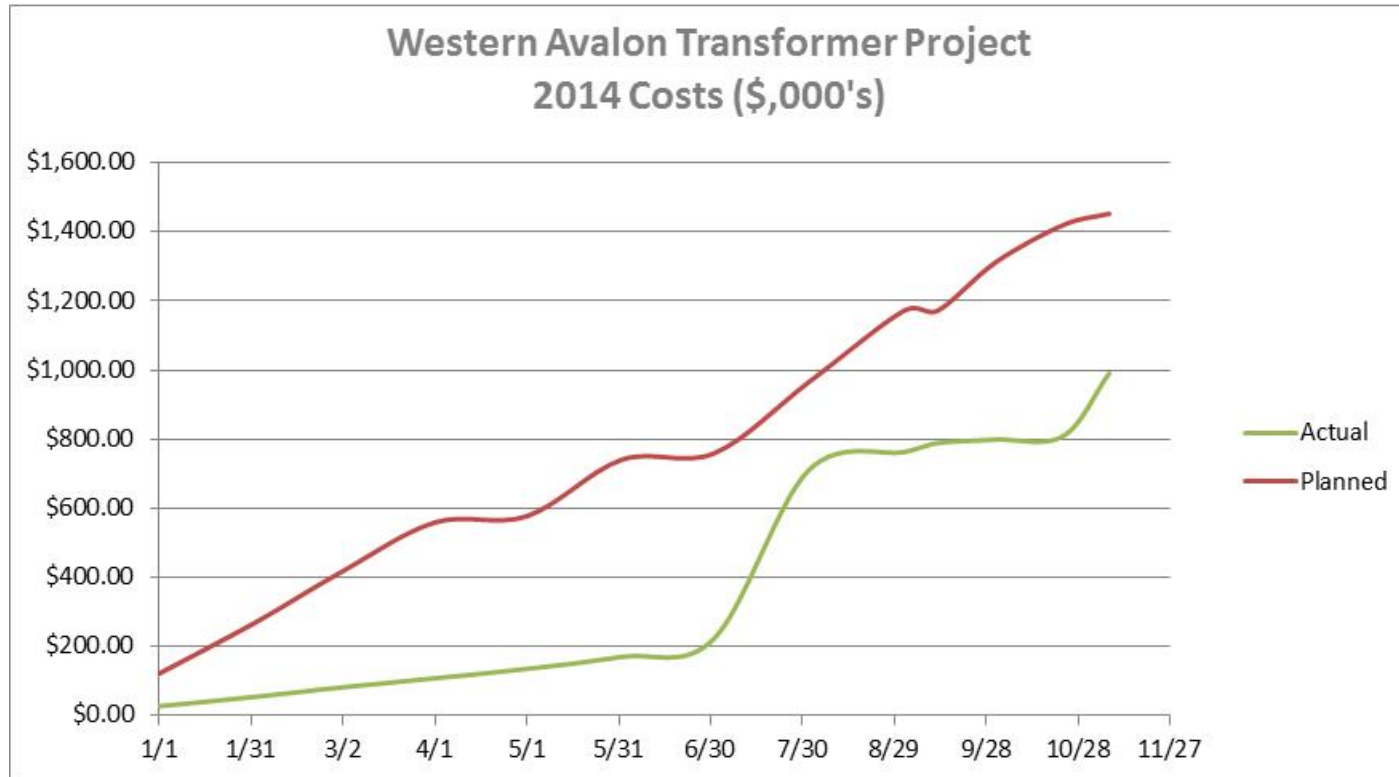
Level 2 - Schedule Summary

Project Complete on Schedule. (Red line fixed at last report position.)

WAV Transformer				05-Nov-14																																	
#	Activity Name	Remaining Duration	Start	Finish	JUNE 2014				JULY 2014				AUGUST 2014				SEPTEMBER 2014				OCTOBER 2014				NOVEMBER 2014				DECEMBER 2014								
					01	06	15	22	29	06	13	20	27	03	10	17	24	31	07	14	21	28	05	12	19	26	02	09	16	23	30	07	14	21	28		
44	Remove internal components of damaged tapchanger	0	17-Sep-14A	17-Sep-14 A																																	
45	Installation of the mounting flange	0	17-Sep-14A	17-Sep-14 A																																	
46	Installation of the new tapchanger	0	17-Sep-14A	23-Sep-14 A																																	
47	Pressurize Transformer 1	0	23-Sep-14A	23-Sep-14 A																																	
48	Perform Dew Point Test 1	0	24-Sep-14A	24-Sep-14 A																																	
49	Pull Vacuum 1	0	24-Sep-14A	24-Sep-14 A																																	
50	Pressurize Transformer 2	0	01-Oct-14A	01-Oct-14A																																	
51	Perform Dew Test 2	0	02-Oct-14A	02-Oct-14A																																	
52	Pull Vacuum 2	0	02-Oct-14A	02-Oct-14A																																	
53	Vacuum Oil Fill	0	03-Oct-14A	03-Oct-14A																																	
54	Clean Up Site	0	23-Oct-14A	23-Oct-14A																																	
55	Commissioning	0	24-Oct-14A	24-Oct-14A																																	
56	Transformer Testing	0	04-Oct-14A	05-Oct-14A																																	
57	Insulation Resistance	0	04-Oct-14A	04-Oct-14A																																	
58	Winding Resistance	0	04-Oct-14A	04-Oct-14A																																	
59	Power Factor (DCBLE)	0	04-Oct-14A	04-Oct-14A																																	
60	Oil Dielectric Test	0	04-Oct-14A	04-Oct-14A																																	
61	Turns Ratio Test	0	05-Oct-14A	05-Oct-14A																																	
62	Dissolved Gas in Oil Analysis	0	05-Oct-14A	05-Oct-14A																																	
63	Elect P&C/Comms. Commissioning	0	25-Aug-14A	24-Oct-14A																																	
64	Commissioning Plans	0	25-Aug-14A	30-Sep-14 A																																	
65	Develop Commissioning Plan	0	25-Aug-14A	30-Sep-14 A																																	
66	Develop Energization Plan	0	25-Aug-14A	30-Sep-14 A																																	
67	Commission Transformer	0	21-Oct-14A	24-Oct-14A																																	
68	Protective Devices and Gauges	0	21-Oct-14A	21-Oct-14A																																	
69	Fans/Pumps/Heaters	0	21-Oct-14A	21-Oct-14A																																	
70	Tap Changer Paralleling	0	22-Oct-14A	22-Oct-14A																																	
71	Core Tests	0	23-Oct-14A	23-Oct-14A																																	
72	Heater Operations	0	24-Oct-14A	24-Oct-14A																																	
73	Make RTU Changes and Telecontrols Check with EDC	0	24-Oct-14A	24-Oct-14A																																	

Cost Summary - S Curve

(Addresses Project Accounting Reconciliation in Oct/Nov)



Note: Forecast Final Expenditures (FFE) tracking with compliance with original budget. Actual Costs initially reflects contractual commitments for major equipment and install contracts. Oct/Nov reconciles actual plus accrued costs.

Risk Analysis

Operational – Early Life In-Service Failure of New Tap Changer (Bathtub Effect) is possibility
- monitoring status

Project Photos

Photo 1 – WAV T5 In-Service



Photo 2 – WAV T5 In-Service (View 2)



Photo 3 – WAV T5 In-Service (View 3)



